








Venue Specifications

- Kulturladen
- Konstanz e.V.

The Kulturladen, short KULA, is a culture center founded in 1983.



	Booking	2
	Itinerary (+Nightliner)	3
	The Kulturladen	5
	General informations	6
	Backstage	7
	Sound engineering	9
	Light engineering	11
	Gallery	18

CONTACT



Adrian Rippel



info@kulturladen.de
booking@kulturladen.de

+49 7531 52954



Kulturladen e.V.
 Joseph-Belli-Weg 5
 78467 Konstanz



Monday-Friday
 10:00-18:30



Presales:

We are contractual partners with Tickets Connected and always create a quota with Reservix for the pre-sale start. Exclusivity of other pre-sale channels such as CTS Eventim cannot be accepted for contractual reasons and is not in the interest of our audience. We only create tickets on Tickets Connected. If an additional ticket provider is desired, this must be set up yourself after approval. For Facebook events with several admins, the Tickets Connected ticket link applies, unless otherwise agreed. We do not accept any refunds or subsidies for advertising costs.



Supports:

Please clarify support with us beforehand. Depending on the travel party and event, we don't always have the capacity to accommodate more bands. Our backstage and storage space for backline are limited. We generally don't have an extra budget for support. When we pay for support, we select the support ourselves and support the local music scene. Pay to Play Supports please be honest. Pay to Play Supports please be honest. The local costing for this has to be negotiated separately and is not taken over by us in full.



Gage:

If the fee is to be paid in cash, please inform us at least two weeks before the event. A prepayment is up to max. 50% accepted. Even right before the show, the payment of the fee is still a prepayment.



GEMA:

We reserve the right to pay Gema the fee only after we have received all necessary and correctly completed documents to prove it.



Hotel:

We book our artists in 3 good hotels near the Venue.



Merchandising:

Fixed space in the entrance area right next to the backstage for merchandising available. (See page 6)





Coming from Singen (A 81)

Coming from Singen on the motorway A81 drive direction Konstanz-Innenstadt/ Schweiz. While driving on the B33 you pass the turn to „Insel Reichenau“, the Airport Konstanz (easy to overlook) and the Industrial area. After you passed Mc Donalds and Burger King you will get to a two lane circle. Leave the roundabout through the exit „Industriegebiet Oberlohn“. Now the Street takes a left and a right bend and you get to a roundabout again. Exit the roundabout and drive over the bridge which is leading over the rail track. 50 meters behind the bridge you can see the Kulturladen Konstanz on the left side. **If you're touring in a van** you should go left at the traffic lights. Parking Place and loading is at the backside of the Kulturladen. **If you are touring with a nightliner** you should go right at the traffic lights and after 100meters you will find the gateway to the nightliner parking place on the right side.

Coming from Switzerland

After passing the Border, use direction „Alle Richtungen“. Follow the Street and cross the river Rhein by using the right lane on the bridge. Now you will get to a two lane circle.

Leave the roundabout thru the exit „Oberlohn“. Now the Street takes a left and a right bend and you get to a roundabout again. Exit the roundabout and drive over the bridge which is leading over the rail track. 50 meters behind the bridge you can see the Kulturladen Konstanz on the left side. **If you're touring in a van** you should go left at the traffic lights. Parking Place and loading is at the backside of the Kulturladen. **If you are touring with a nightliner** you should go right at the traffic lights and after 100meters you will find the gateway to the nightliner parking place on the right side.

Coming from Meersburg (by ferry)

After leaving the ferry, drive direction „Konstanz – Innenstadt“ and/or „Schweiz“. At the traffic lights in front of „Die alte Rheinbrücke“ turn right and drive direction „Singen“. After 500 meters you will pass the „Media Markt“ . After 200 more meters you will get to a two lane circle. Leave the circle through the exit „Oberlohn“. Now the Street takes a left and a right bend and you get to a roundabout again. Exit the circle and drive over the bridge which is leading over the rail track. 50 meters behind the bridge you can see the Kulturladen on the left side. **If you're touring in a van** you should go left at the traffic lights.

Parking Place and loading is at the backside of the Kulturladen. **If you are touring with a nightliner** you should go right at the traffic lights and after 100meters you will find the gateway to the nightliner parking place on the right side.



Das Personal des Kulturladens ist zu jeder Zeit weisungsbefugt.
Wir nutzen für Produktionen generell unsere Hausanlage für Licht und Ton.



Parkplätze:

Unfortunately we have far to less parking facilities for nightliner, minibusses and cars nearby. Therefore we would ask especially nightliner productions to come to an exact agreement with us.



Loading distance

Distance from the car park to the stage approximately 20 meters.



Capacity:

- Standing capacity: 450
- With seats: about 140 seats, 40 standing



Sound/Light

Availability of fixed house installation for sound and light.



Lautstärke:

In order to be able to offer our audience an optimal concert experience, we would like to have an average volume level of max. 99db(A) at FOH during the show (according to DIN 15 905 part 5). However, in this way we also want to protect the audience from too high sound pressure levels.



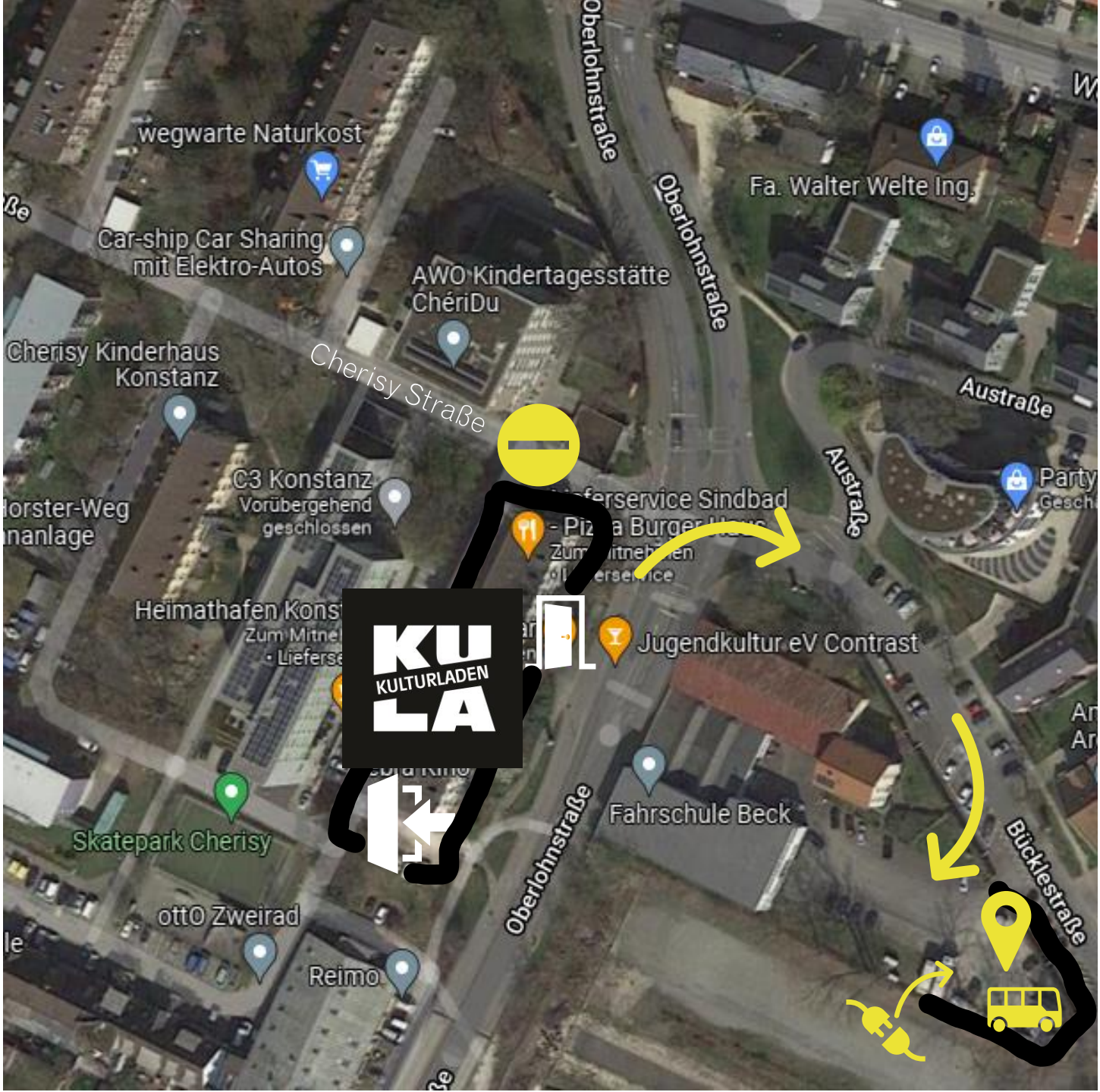
Information:






For any further information please visit our general homepage <http://www.kulturladen.de>
You will find this information sheet as well as further information regarding general information about the Kulturladen, technology and a location plan under <http://www.kulturladen.de/technik.html>



GENERAL
INFORMA-
TIONS

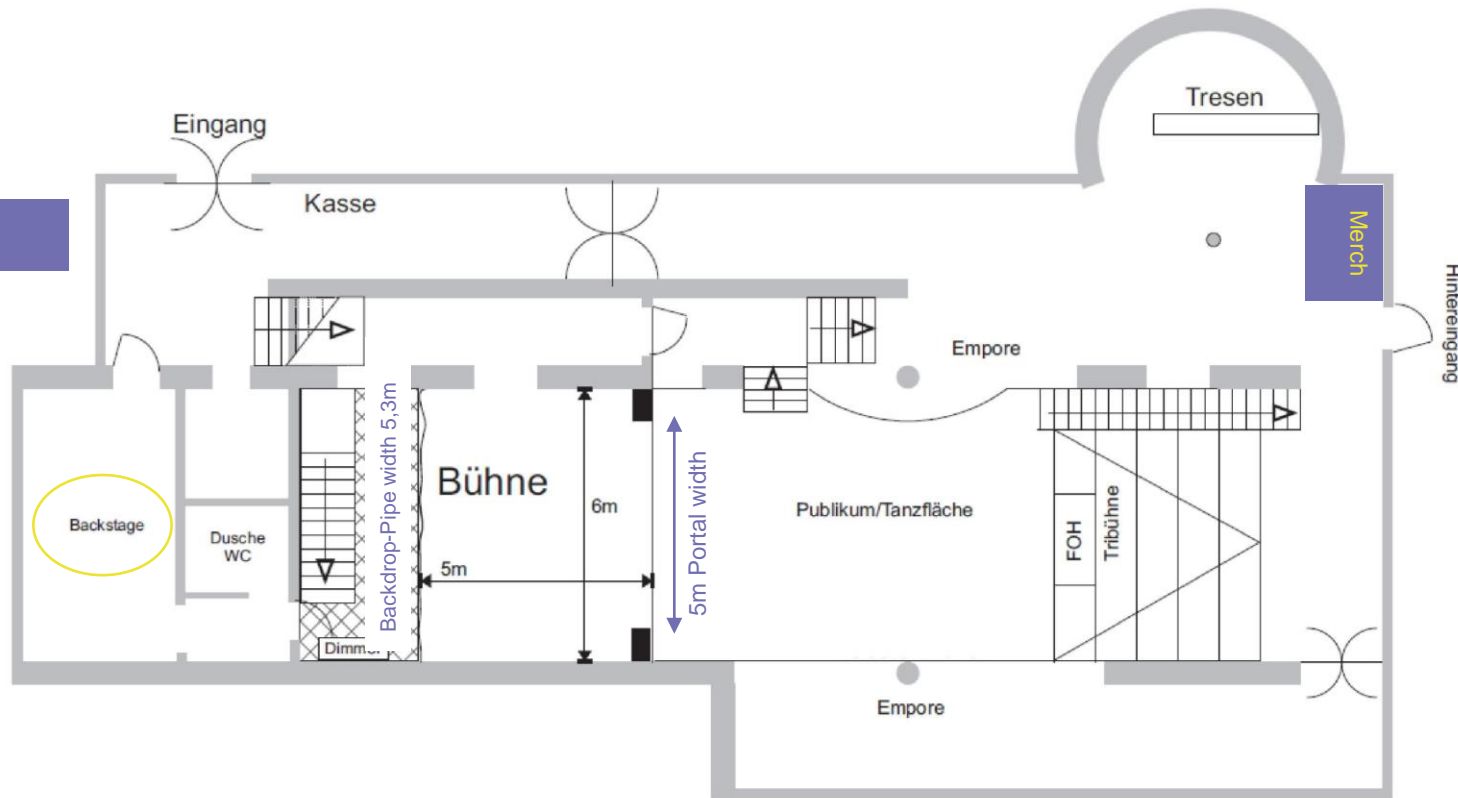




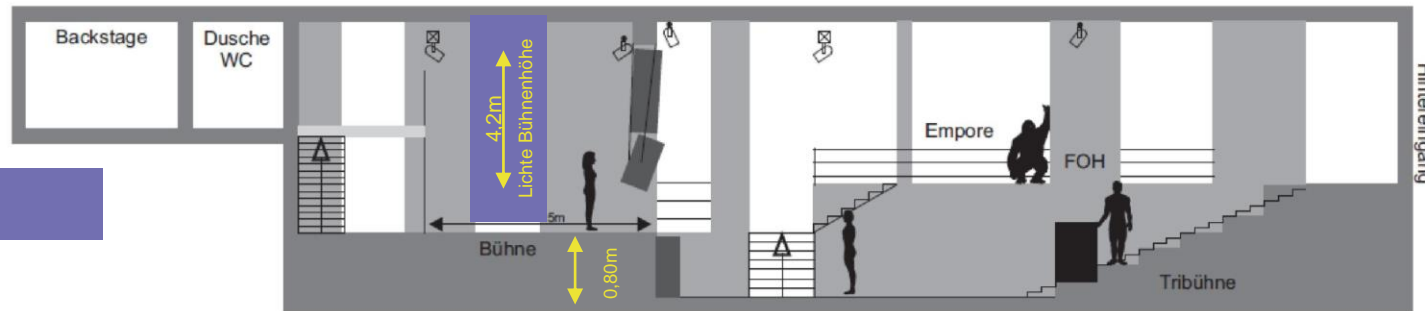
-  Parking Nightliner
-  Publicly entry
-  Back-entry to load the material
-  



TOP VIEW



SIDE VIEW



THE KULT-URLADEN



Backstage:

1 room for 15 people with direct access to the bathroom and the scene.

Stage width	6 m
Stage depth	5 m
Höhe	1,15 m
Backdrop-Pipe	5,3 m
Portailbreite	5 m
Light stage height	4,2 m



1 room for 15 persons with direct access to the bathroom and the stage

Raum	Material
Backstage	Fridge, cutlery, couches, TV, Wifi...
Badezimmer	1 toilet, 1 shower, 1 sink



FRONT-PA

Speakers	2	KS TXII Mid-Hi Stacks mit 2"/1" B&C
	2	Frontfill/LowMids Doppel 15" B&C / 2"/1" B&C
Amping	2	RAM-Audio S6004
Subwoofer	6	R ² W18 Custom Kula (B&C 18TBW100 - 1000W/8Ohm)
	2	PKNC XD5002
PA-Controller	1	BSS BLU-160

MONITORING

Speakers/Wedges	8	Wedges coaxial R ² CX14M (B&C 14CXN76 - 400W/8Ohm)
	2	Subwoofer R ² W1815 (B&C 18NBX100 - 1000W/8Ohm)
Controller/Amping	2	Xilica XP-4080
	2	RAM-Audio S6004

FRONT

Mixing console	1	Midas M32 + Midas DL 251 Stagebox
	1	Behringer X32

DJ-EQUIPMENT

DJ-Mixer	1	Pioneer DJM-900NXS2
	1	Pioneer DJM-600
Record Player	4	Technics 1210 MK2 mit Orthofon-Systemen
CD-Player	2	Pioneer CDJ-350

MICROHPONES / DI-BOXEN

Dynamic	4	Shure SM 58
	2	Shure Beta 58a
	2	Sennheiser e609
	1	Shure Beta 52a
	6	Shure SM 57
	1	AKG D112

Wireless	2	Shure QLX SM58
Condensor	1	Shure Beta 91a
	3	Rode NT5
	3	t.bone SC100
D/I-Box active	4	BSS AR-133
	2	LD Systems LDI 02
D/I-Box passive	4	Atelier der Tonkunst
	1	Stage Line (4-fach)

POWER SUPPLY

PA und Backline	1	CEE 32 A
-----------------	---	----------

SOUND



Bass Amp: Ampeg Classic SVT-410HE (4x10er)



Music Man 210 Combo



**Guitar Amp: Orange AD30HTC +
Orange Box 4 x 12er**



SONOR Force 2005 - Birke mit den Kesseln:

Bassdrum - 22"x17"

Snare - 14"

Toms 12, 13, 16

General hardware available: Hi-Hat-stand, 4
cymbal-stands, stool, pedal.



Cymbals, Snare and pedal should be brought
by drummer.



SAALLICHT		komplett stufenlos dimmbar
Desk	1	ChamSys MagicQ MQ50
Backtruss	8	LED Cameo Flat Pro Spot
	8	Par 64 (CP 60, CP 61)
	2*8	ACL-Par36
	2*2	DWE-Par36
	1	Profilspot (nicht fokussierbar)
50mm Pipe (about 1meter in front of the Backtruss)	4	LED Wash GLP Impression 4Xs
	4	Martin Rush MH1 Profile Plus
	1	Stroboskop 1500W
Front – Edge of the stage	8	Par 64 (CP 62)
	3	Fresnel 1 kW
Front Portal	2	Par 64 (CP 62)
	2	Fresnel/PC 1 kW
Fronttruss above audience	4	LED Eurolite 7C-12
	4	Par 64 (CP 61)
	3	Fresnel 1 kW
	2	Profiler 1 kW26°

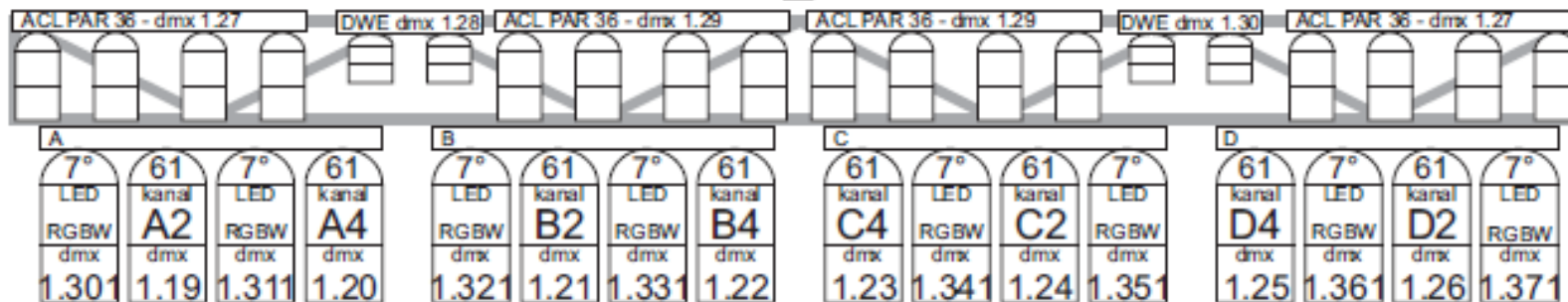
Alley / Wall	4	LED Eurolite 7C-7 als Gasse hinter PA in ca. 1,5m und 2,2m
	4	Eurolite LED Bar RGB 252/10
Floorspots	4	LED Eurolite 7C-12
	4	LED Wash GLP Impression 4Xs
	2	Eurolite LED Bar RGB 252/10
	8	Par 56 T-300 (300W) (3 Dimmerkanäle verfügbar)
Partylight	4	LED Cameo Flat Pro Spot
	4	LED Eurolite 7C-7
	6*4	Par 36 (ACL-like)
Fog/Haze	1	Hazer Look UNIQUE 2.1
POWER SUPPLY		
Light	1	CEE 63 A
Available	1	CEE 16 A





Back Truss

Spot -Headshot auf Center
- nicht fokussierbar -dmx 1.41



Stroboskop
1.5 kW dmx 1.71

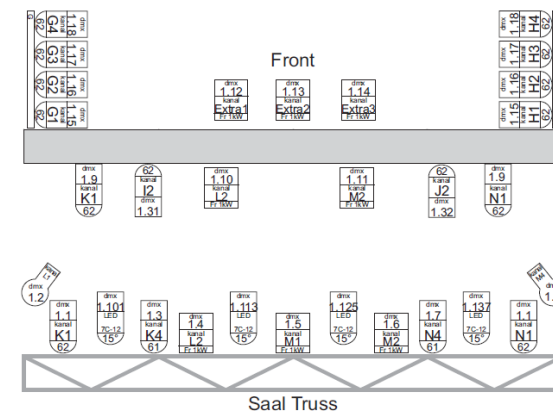
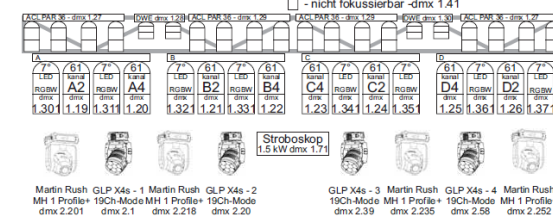


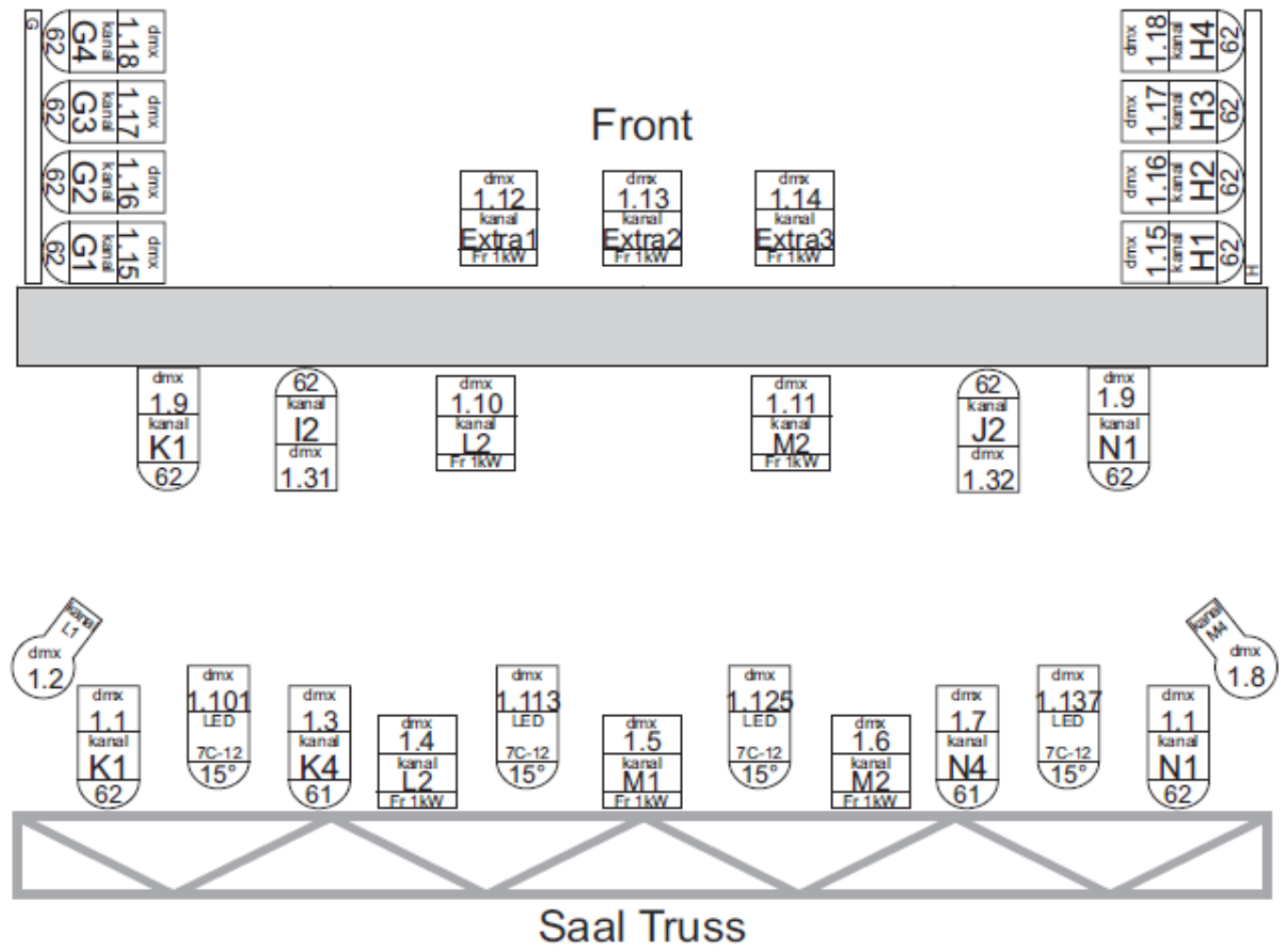
Martin Rush GLP X4s - 1 Martin Rush GLP X4s - 2
MH 1 Profile+ 19Ch-Mode MH 1 Profile+ 19Ch-Mode
dmx 2.201 dmx 2.1 dmx 2.218 dmx 2.20

GLP X4s - 3 Martin Rush GLP X4s - 4 Martin Rush
19Ch-Mode MH 1 Profile+ 19Ch-Mode MH 1 Profile+
dmx 2.39 dmx 2.235 dmx 2.58 dmx 2.252

Back Truss

Spot -Headshot auf Center
- nicht fokussierbar -dmx 1.41





UNIVERE 1	
DMX-Adress	Spotlight
1.1-1.14	Frontlicht conventional Profiler/Fresnel/PAR 64
1.15-1.18	Gasse conventional PAR 64 symmetric
1.19-1.26	Backtruss conventional PAR 64
1.27 + 1.29	Backtruss ACL
1.28 + 1.30	Backtruss DWE
1.31 + 1.32	PAR 64 front stage DWE-like
1.33 - 1.35	Floorspots
1.41	Backtuss Headshot C
1.42 + 1.43	Solo Pars for position in the concert hall
1.44 + 1.45	Profiler for rear drum position C
01.01.46	Pinspots Mirrorball hall
1.47 + 1.48	Lighting DJ booth on stage
1.61 - 1.66	Pinspots as Houselight
1.67+ 1.62	LED PST-15W auf Half Mirror Ball
1.71	1500W Strobe Stage 1 channel shutter only
1.75-78	4 Strobes for Hall (dance)

UNIVERSE 1	
DMX-Kanal	Spotlight
ab 1.101	16 LED Spots Eurolite 7C-12/7C-7 im 12-channel mode 4 * 7C-12 Fronttruss 4 * 7C-7 Alley 4 * 7C-12 Floor 4 * 7C-7 Dancefloor (houselight)
ab 1.301	12 LED Spots Cameo Flat Pro 7 Spot im 10 Kanal-Modus 8 * Backtruss 4 * dance floor
1.511	Hazer Look UNIQUE 2.1

UNIVERSE 2	
DMX-channel	Spotlight
ab 2.1	8 LED Wash GLP Impression 4Xs im High Resolution (Extended) - Mode -19 DMX Channels 4* ceiling 4 * Floor
ab 2.201	4 LED Spots Martin Rush MH1 Profile Plus -17 channels on the ceiling
ab 2.401	6 Eurolite LED Bar RGB 252/10 im 12 channel mode 4 * on the walls 2 * mobile



Eurolite LED 7C-12 und 7C-7 (12 Kanal Modus)	
CH 1	Dimmer
CH 2	Shutter
CH 3	Red
CH 4	Green
CH 5	Blue
CH 6	Cool white
CH 7	Warm white
CH 8	Amber
CH 9	Preset Colors
CH 11	Internal programs
CH 12	Color temperature

Cameo Flat Par Pro Spot (10 Kanal Modus)	
CH 1	Dimmer
CH 2	Shutter
CH 3	Duration
CH 4	Red
CH 5	Green
CH 6	Blue
CH 7	White
CH 8	Color Macro (override RGB)
CH 9	Color Temperature
CH 10	Sound (0-5 = Off)

LEDWash GLP Impression 4Xs (19 DMX Kanäle)	
High Resolution (Extended) – Mode	
CH 1	Pan
CH 2	Pan fine
CH 3	Tilt
CH 4	Tilt fine
CH 5	Red
CH 6	Red fine
CH 7	Green
CH 8	Green fine
CH 9	Blue
CH 10	Blue fine
CH 11	White
CH 12	White fine
CH 13	Shutter



Martin Rush Mh1 Profile Plus (17 DMX Kanäle)

CH 1	Pan
CH 2	Pan fine
CH 3	Tilt
CH 4	Tilt fine
CH 5	Pan/Tilt Speed
CH 6	Dimmer
CH 7	Shutter
CH 8	Color wheel 1
CH 9	Color wheel 2
CH 10	Gobo wheel 1 (rot)
CH 11	Gobo rotation
CH 12	Gobo wheel 2 (fix)
CH 13	Prism
CH 14	Prism rot
CH 15	Iris
CH 16	Focus
CH 17	Control

Eurolite LED Bar RGB 252/10

(12-channel modes)

CH 1	MODE Dmx 1-15 für 12 Kanal-Modus
CH 2	Dimmer
CH 3	Flash
CH 4/5/6	RGB-Modul 1
CH 7/8/9	RGB-Modul 2
CH 10/11/12	RGB- Modul 3

(6-Kanal-Modus)

CH 1	MODE Dmx 6-30 für 6 Kanal-Modus
CH 2	Dimmer
CH 3	Flash
CH 4/5/6	RGB alle Module

Strobe-Controller DMX-10V

0-249	Bitzgeschwindigkeit
250-255	single flash

Pinspot Half mirror ball Eurolite LED PST-15

CH 1	Shutter
CH 2	Dimmer

Hazer Look UNIQUE 2.1

CH 1	Pump
CH 2	Ventilator



Main entry for the Kula Concert Hall & Kula bar



Little parking at the back entry

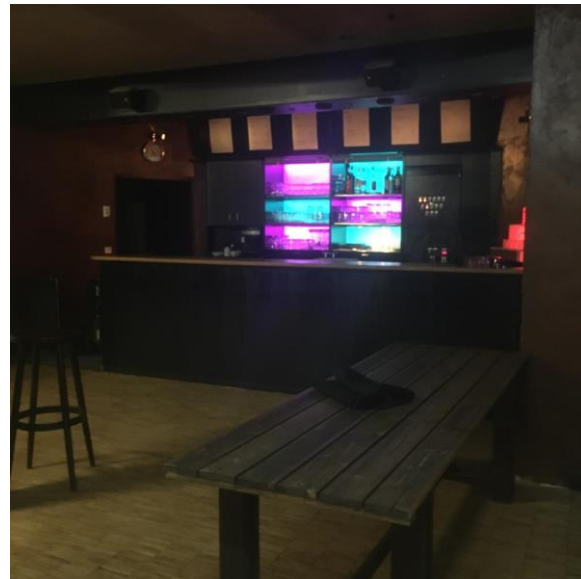
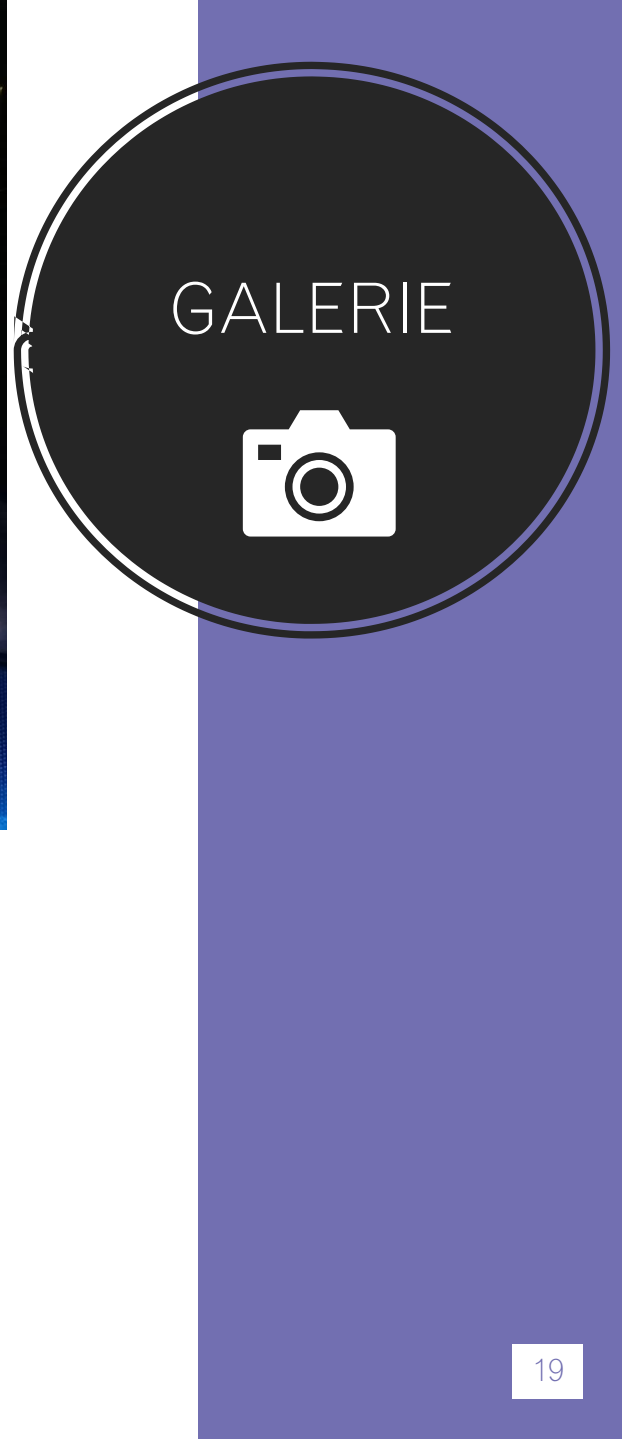
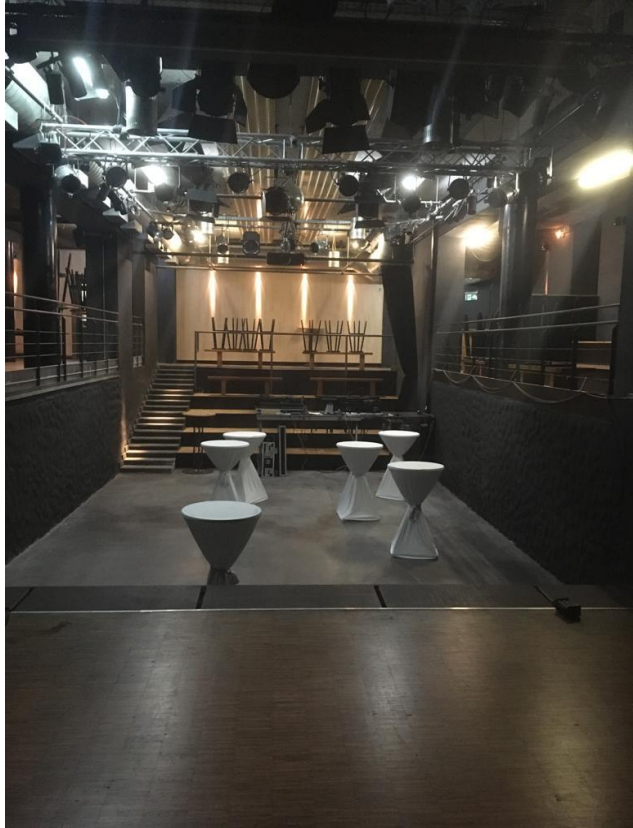


Back entry to unload



Big parking under the bridge





KU
KULTURLADEN
LA

Concert hall and
its bar

KULA restaurant and bar

