

Kulturladen e.V. Tel.: +49(0)7531/5 29 54  
Joseph-Belli-Weg 5 Fax: +49(0)7531/5 51 39  
78467 Konstanz Mail: info@kulturladen.de

## Capacity

Standing capacity 450 with seats about 140 seats, and about 40 standing

## Sound / Light

Availability of fixed house installation for sound and light

## Loading distance

Distance from car park to the stage approximately 20 metres with 6 steps

## Stage

Width of stage	6 m	Visible Width of stage	5 m
Depth of stage	5 m	height	1,15 m
Clearance hight of stage	4,2 m		
Backdrop-Pipe	5,3 m	maximum hight 3,35 m above Stage-Floor	

## Backstage

1 room with a capacity up to 15 persons with direct access to the stage and bathroom including shower

## Car Park

Unfortunately we have far to less parking facilities for nightliner, minibusses and cars nearby. Therefore we would ask especially nightliner productions to come to an exact agreement with us. Arrival is not possible before 1 pm.

## Merchandising

We have a regular stand for merchandising in the entrance area right next to the backstage.

## Contact

Annelies Hell booking@kulturladen.de  
Benjamin Kreibich presse@kulturladen.de  
Tel.: +49(0)7531/5 29 54, Fax: +49(0)7531/5 51 39,  
Core worktime Monday til Friday. 11:00 AM - 5:00 PM

## Information

For any further information please visit our general homepage <http://www.kulturladen.de>  
You will find this information sheet as well as further information regarding general information about the Kulturladen, technology and a location plan under <http://www.kulturladen.de/technik.html>

## Kula's Hall of Fame

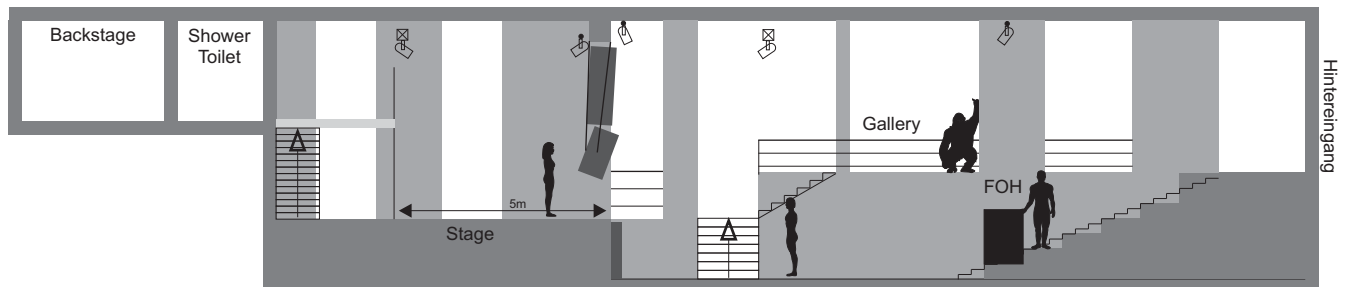
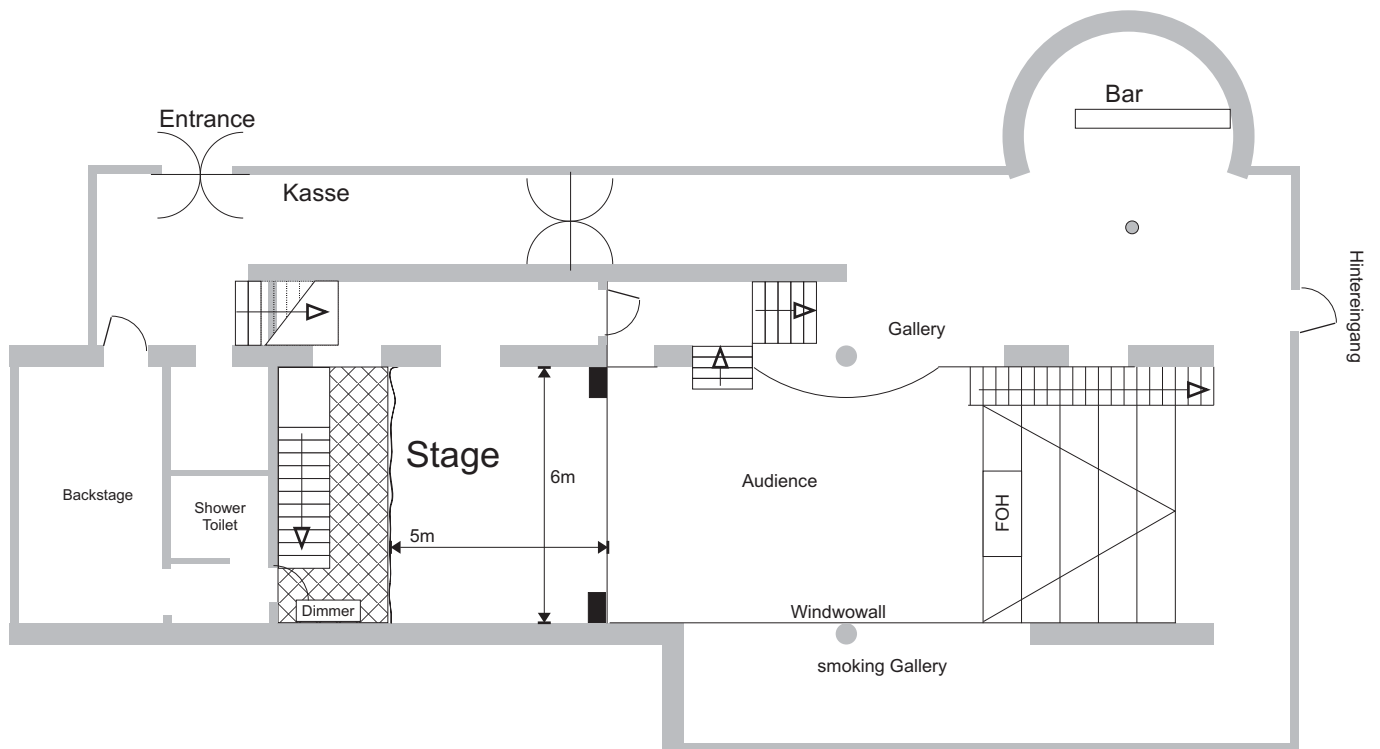
Apocalyptica, Element Of Crime, Fettes Brot, Fishmob, Guano Apes, Rammstein, Hans Söllner, Gentleman, La Brass Banda, Katzenjammer, Sportfreunde Stiller, AnnenMayKantereit and many more



Main entrance



View from rear with backdoor (loading takes place here)



View to the Stage with FOH and Dancefloor



View from Stage into Hall

## SOUND

### Front

Speakers	2	KS TXII Mid-Hi Stacks	fix installed
	2	Frontfill/LowMids double 15" B&C / 2" JBL	fix installed
Amping	2	RAM-Audio S6004	fix installed
Subwoofer	6	R <sup>2</sup> W18 Custom Kula (B&C 18TBW100 - 1000W/8Ohm)	fix installed
	2	PKNC XD5002	fix installed
PA-Controller	1	BSS Blue-160	

### Monitoring

Speakers / Wedges	8	Wedges coaxial R <sup>2</sup> CX14M (B&C 14CXN76 - 400W/8Ohm)
	2	Subwoofer R <sup>2</sup> W1815 (B&C 18NBX100 - 1000W/8Ohm)
Controller/Amping	2	Xilica XP-4080
	2	RAM-Audio S6004

### FOH

Desk	1	Midas M32 + Midas DL 251 Stagebox
	1	Behringer X32

### Microphones / DI

dynamic	4	Shure SM 58	6	Shure SM 57
	2	Shure Beta 58	1	Sennheiser MD 421
	2	Sennheiser e609	4	Sennheiser e604
	1	Shure Beta 52a	1	AKG D112
	2	Shure QLX SM58		
wireless condensor	1	Shure Beta 91a	4	Rode NT5
	3	AKG C 1000	3	t.bone SC100
D/I-Box active	4	BSS AR-133	2	LD Systems LDI 02
D/I-Box passive	4	Atelier der Tonkunst	1	Stage Line (4 channel)

### DJ-Equipment

Dj-Mixer	1	Pioneer DJM-900NXS2
	1	Pioneer DJM-600
Plattenspieler	4	Technics 1210 MK2 mit Orthofon-Systemen
CD-Player	2	Pioneer CDJ-350

### Power

1	CEE 32 A	PA und Backline
---	----------	-----------------

### Local Technician

Uli Straßner  
 Tel.: 07531/9 91 43 91 Fax.: 07531/5 51 39  
 Email: technik@kulturladen.de

## LIGHTS

House Desk	1	complete dimmable from FOH Position MA Lighting dot2 XL-F
Backtruss	8	LED Cameo Flat Pro 7 Spot
	8	Par 64 (CP 60, CP 61)
	2 * 8	ACL-Par36
	2 * 2	DWE-Par36
	1	Profilsport (fix Focus)
2"-Pipe (about 1m in Front of the Backtruss)	4	LED Wash GLP Impression 4Xs
	4	Martin Rush MH1 Profile Plus
	1	Stroboskop 1500W
Front - Edge of the Stage	2 * 4	Par 64 (CP 62)
	3	Fresnel 1 kW
Front Portal	2	Par 64 (CP 62)
	2	Fresnel/PC 1 kW
Fronttruss above Audience	4	LED Eurolite 7C-12
	4	Par 64 (CP 62/61)
	3	Fresnel 1 kW
	2	Profiler 1 kW 26 °
Gasse/Wall	4	LED Eurolite 7C-7 als Gasse hinter PA in ca 1,5m und 2,2m
	4	Eurolite LED Bar RGB 252/10
Floorspots	4	LED Eurolite 7C-12
	4	LED Wash GLP Impression 4Xs
	2	Eurolite LED Bar RGB 252/10
	8	Par 56 T-300 (300W) (3 Dimmerchannel available)
Partylight	4	LED Cameo Flat Pro Spot
	4	LED Eurolite 7C-7
	6 * 4	Par 36 (ACL-like)
Fog/Haze	1	Hazer Look UNIQUE 2.1
<b>Power</b>		
1	CEE 63 A	Lights
1	CEE 16 A	available

### Local Technician

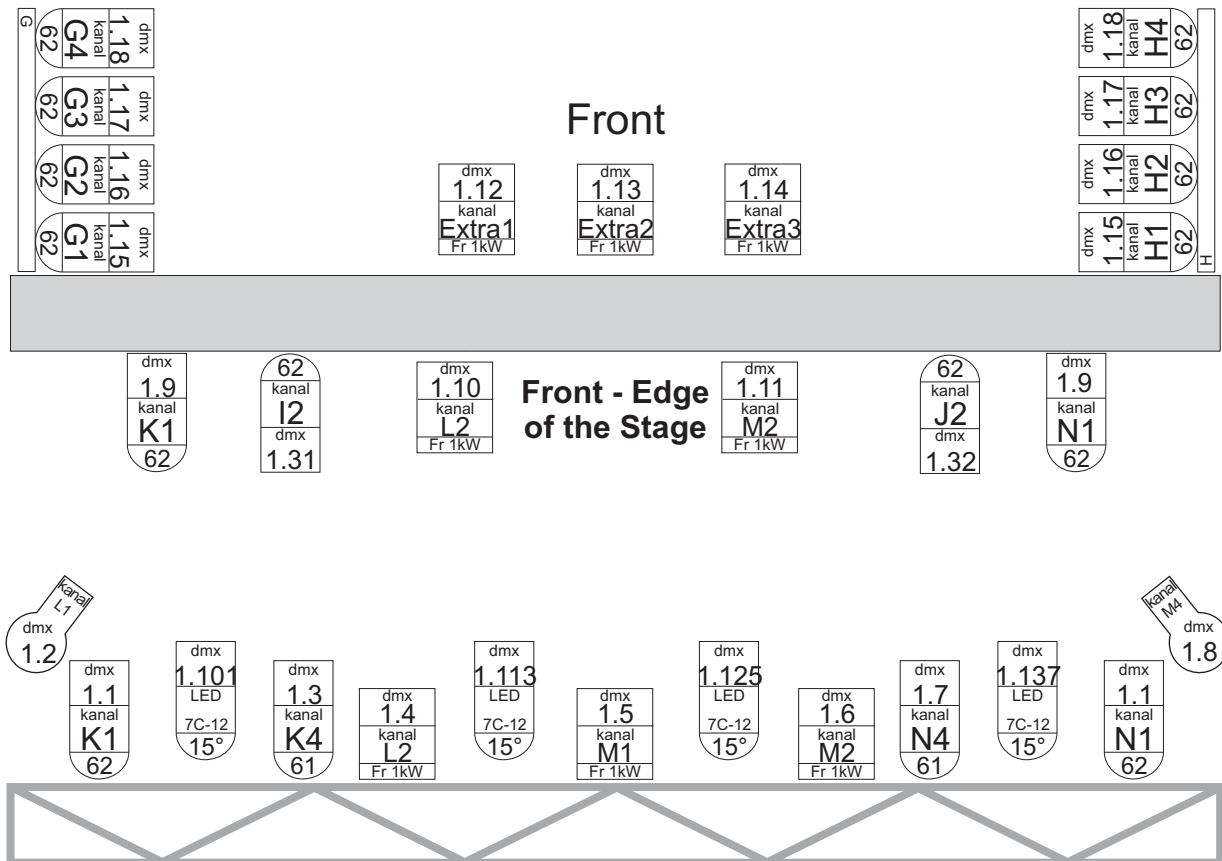
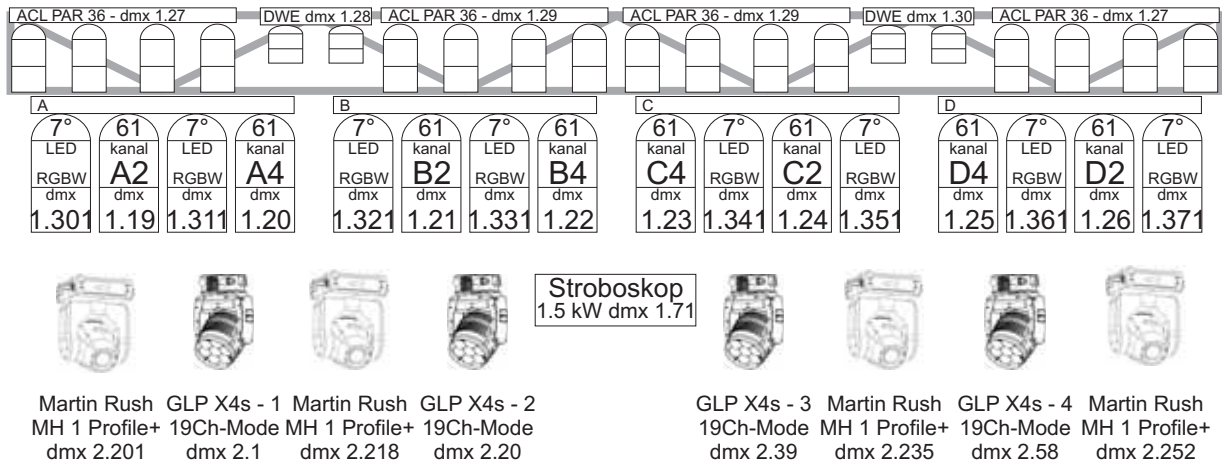
Uli Straßner

Tel.: 07531/9 91 43 91 Fax.: 07531/5 51 39  
 Email: technik@kulturladen.de

## LIGHTPLOT

### Backtruss

Spot - Headshot to Centerposition  
 - fix focus -dmx 1.41



### Fronttruss above Audience



# TECHNICS

Kulturladen e.V. Tel.: +49(0)7531/5 29 54  
Joseph-Belli-Weg 5 Fax: +49(0)7531/5 51 39  
78467 Konstanz Mail: info@kulturladen.de

## LIGHTS

### DMX-Adress

#### Universe 1

- 1.1-1.14 Frontlicht conventional  
Profiler/Fresnel/Par64
- 1.15-1.18 Gasse conventional  
Par64 symmetric
- 1.19-1.26 Backtruss conventional  
Par64 single patched
- 1.27 + 1.29 Backtruss ACL
- 1.28 + 1.30 Backtruss DWE
- 1.31 + 1.32 Par64 Stage Front DWE-like
- 1.33 - 1.35 Floorspots

- 1.41 Backtruss Headshot C
- 1.42 + 1.43 Solo Pars for positions in the hall
- 1.44 + 1.45 Profiler for rear drum position C
- 1.46 Pinspots Mirrorball hall
- 1.47 + 1.48 Lighting DJ Booth on stage
- 1.61 - 1.66 Pinspots as Houselight
- 1.67 + 1.62 LED PST-15W th Halfmirrorball

- 1.71 1500W Strobe Stage  
one channel Shutter onlyr
- 1.75-78 4 Strobes hall

- from 1.101 16 LED Spots Eurolite 7C-12/7C-7  
12 Channel-Mode  
4 \* 7C-12 Fronttruss  
4 \* 7C-7 Gasse  
4 \* 7C-12 Floor  
4 \* 7C-7 Tanzfläche (Houslight)

- from 1.301 12 LED Spots Cameo Flat Pro 7 Spot  
10 Channel-Mode  
8 \* Backtruss  
4 \* Tanzfläche (Houselight)

- 1.511 Hazer Look UNIQUE 2.1

#### Universe 2

- from 2.1 8 LED Wash GLP Impression 4Xs  
im High Resolution (Extended) -  
Mode -19 DMX Channels  
4\* Decke  
4 \* Floor
- from 2.201 4 LED Spots Martin Rush MH1 Profile Plus -  
17 Kanäle  
an der Decke
- from 2.401 6 Eurolite LED Bar RGB 252/10  
im 12Channel-Mode  
4 \* at the wall  
2 \* flexible

#### Eurolite LED 7C-12 und 7C-7

12 Channel-Mode

Last update: 31.08.2019

- |       |                   |      |            |
|-------|-------------------|------|------------|
| CH 1  | Dimmer            | CH 2 | Shutter    |
| CH 3  | Red               | CH 4 | Green      |
| CH 5  | Blue              | CH 6 | Cool white |
| CH 7  | Warm white        | CH 8 | Amber      |
| CH 9  | Preset Colors     |      |            |
| CH 11 | Internal programs |      |            |
| CH 12 | Color temperature |      |            |

#### Cameo Flat Par Pro Spot

10 Channel-Mode

- |       |                            |      |          |
|-------|----------------------------|------|----------|
| CH 1  | Dimmer                     |      |          |
| CH 2  | Shutter                    | CH 3 | Duration |
| CH 4  | Red                        | CH 5 | Green    |
| CH 6  | Blue                       | CH 7 | White    |
| CH 8  | Color Macro (override RGB) |      |          |
| CH 9  | Color Temperature          |      |          |
| CH 10 | Sound (0-5 = Off)          |      |          |

#### LED Wash GLP Impression 4Xs:

High Resolution (Extended) - Mode

19 DMX Channel

- |       |         |       |            |
|-------|---------|-------|------------|
| CH 1  | Pan     | CH 2  | Pan fine   |
| CH 3  | Tilt    | CH 4  | Tilt fine  |
| CH 5  | Red     | CH 6  | Red fine   |
| CH 7  | Green   | CH 8  | Green fine |
| CH 9  | Blue    | CH 10 | Blue fine  |
| CH 11 | White   | CH 12 | White fine |
| CH 13 | Shutter |       |            |

#### Martin Rush Mh1 Profile Plus

17 DMX Channel

- |       |                |       |                    |
|-------|----------------|-------|--------------------|
| CH 1  | Pan            | CH 2  | Pan fine           |
| CH 3  | Tilt           | CH 4  | Tilt fine          |
| CH 5  | Pan/Tilt Speed | CH 6  | Dimmer             |
| CH 7  | Shutter        | CH 8  | Color wheel 1      |
| CH 9  | Color wheel 2  | CH 10 | Gobo wheel 1 (rot) |
| CH 11 | Gobo rotation  | CH 12 | Gobo wheel 2 (fix) |
| CH 13 | Prism          | CH 14 | Prism rot          |
| CH 15 | Iris           | Ch 16 | Focus              |
| CH 17 | Control        |       |                    |

#### Eurolite LED Bar RGB 252/10:

12-Kanal-Modus

CH 1 MODE Dmx 1-15 for 12 Channel-Mode

CH 2 Dimmer

CH 3 Flash

CH 4/5/6 RGB-Modul 1

CH 7/8/9 RGB-Modul 2

CH 10/11/12 RGB- Modul 3

6-Kanal-Modus

CH 1 MODE Dmx 6-30 for 6 Channel-Mode

CH 2 Dimmer

CH 3 Flash

CH 4/5/6 RGB alle Module

#### Strobe-Controller DMX-10V:

DMX-Value 0-249 Rate

DMX-Value 250-255 single Flash

#### Pinspot Halfmirrorball Eurolite LED PST-15:

- |      |         |      |        |
|------|---------|------|--------|
| CH 1 | Shutter | CH 2 | Dimmer |
|------|---------|------|--------|

Source file: <http://www.kulturladen.de/technik.html>