

## LICHTTECHNIK

Saallicht Lichpult	1	komplett stufenlos Dimmbar MA Lighting dot2 XL-F
Backtruss	8 8 2 * 8 2 * 2	LED Cameo Flat Pro Spot Par 64 (CP 60, CP 61) ACL-Par36 DWE-Par36
50mm Stange (etwa 1m vor Backtruss)	1 4 4 1	Profilsport (nicht fokussierbar) LED Wash GLP Impression 4Xs Martin Rush MH1 Profile Plus Stroboskop 1500W
Front - Bühnenkante	8 3	Par 64 (CP 62) Fresnel 1 kW
Front Portal	2 2	Par 64 (CP 62) Fresnel/PC 1 kW
Front - Saaltruss	4 4 3 2	LED Eurolite 7C-12 Par 64 (CP 61) Fresnel 1 kW Profilier 1 kW 26°
Gasse/Wände	4 4	LED Eurolite 7C-7 als Gasse hinter PA in ca 1,5m und 2,2m Eurolite LED Bar RGB 252/10
Floorspots	4 4 2 8	LED Eurolite 7C-12 LED Wash GLP Impression 4Xs Eurolite LED Bar RGB 252/10 Par 56 T-300 (300W) (3 Dimmerkanäle verfügbar)
Partylicht	4 4 6 * 4	LED Cameo Flat Pro Spot LED Eurolite 7C-7 Par 36 (ACL-like)
Nebel/Haze	1	Hazer Look UNIQUE 2.1

### Stromversorgung

1	CEE 63 A	Hauslicht
1	CEE 16 A	frei

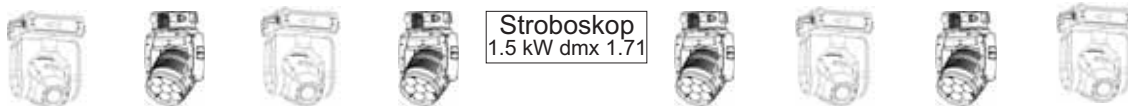
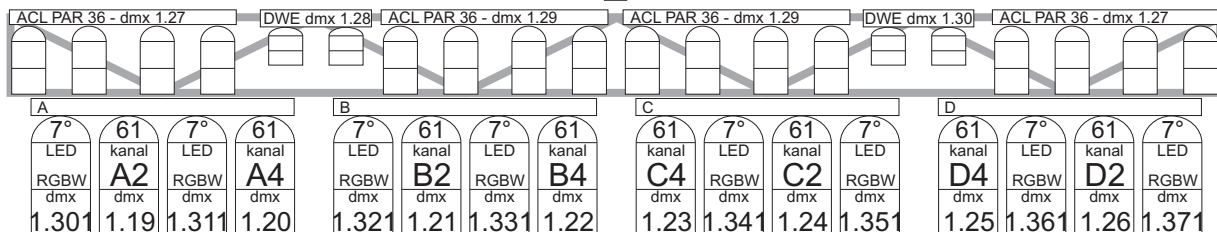
### Haustechniker

Uli Straßner  
 Tel.: 07531/9 91 43 91 Fax.: 07531/5 51 39  
 Email: technik@kulturladen.de

## LICHTTECHNIK

### Back Truss

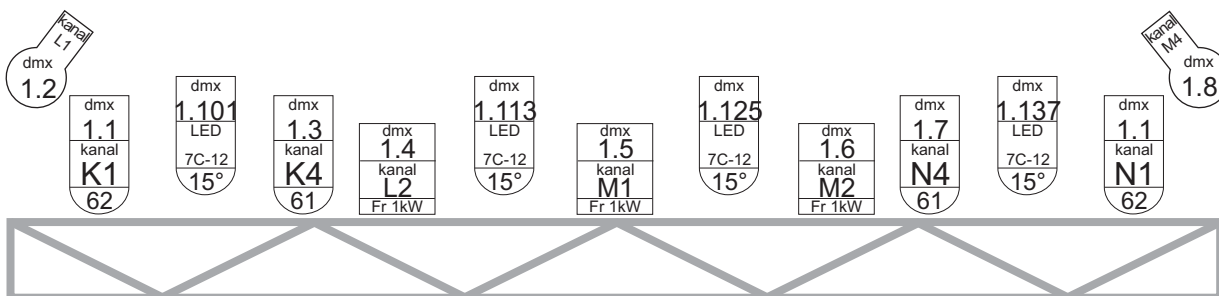
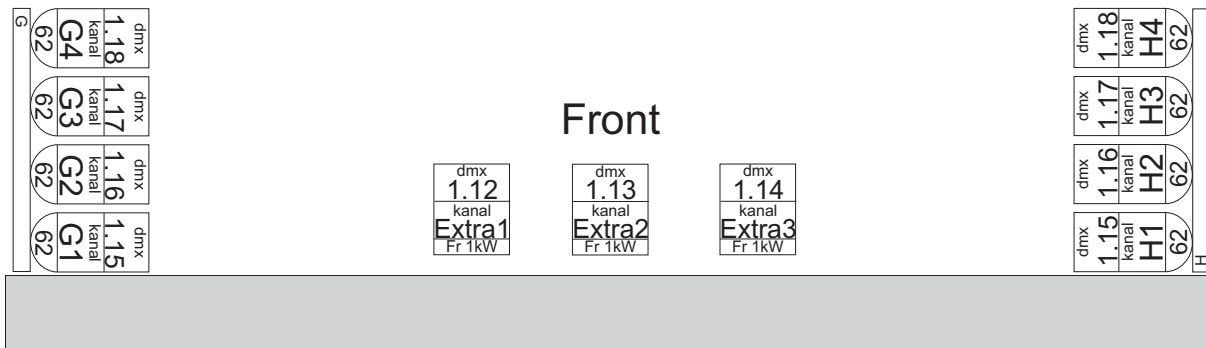
Spot -Headshot auf Center  
 - nicht fokussierbar - dmx 1.41



Martin Rush GLP X4s - 1 Martin Rush GLP X4s - 2  
 MH 1 Profile+ 19Ch-Mode MH 1 Profile+ 19Ch-Mode  
 dmx 2.201 dmx 2.1 dmx 2.218 dmx 2.20

GLP X4s - 3 Martin Rush GLP X4s - 4 Martin Rush  
 19Ch-Mode MH 1 Profile+ 19Ch-Mode MH 1 Profile+  
 dmx 2.39 dmx 2.235 dmx 2.58 dmx 2.252

### Front



### Saal Truss

## LICHTTECHNIK

### DMX-Adressen

#### Universum 1

- 1.1-1.14 Frontlicht konventionel  
Profiler/Fresnel/Par64
- 1.15-1.18 Gasse konventionell  
Par64 symmetrisch
- 1.19-1.26 Backtruss Konventionell  
Par64 einzeln
- 1.27 + 1.29 Backtruss ACL
- 1.28 + 1.30 Backtruss DWE
- 1.31 + 1.32 Par64 Bühne vorne DWE-like
- 1.33 - 1.35 Floorspots
- 1.41 Backtruss Headshot C
- 1.42 + 1.43 Solo Pars für Positionen im Saal
- 1.44 + 1.45 Profiler für Drumposition hinten C
- 1.46 Pinspots Spiegelkugel Saal
- 1.47 + 1.48 Beleuchtung DJ-Platz auf Bühne
- 1.61 - 1.66 Disco-Pinspots für Houselight
- 1.67+ 1.62 LED PST-15W auf Halbspiegelkugel

- 1.71 1500W Strobe Bühne  
1 Kanal nur Shutter
- 1.75-78 4 Strobes Tanzfläche
- ab 1.101 16 LED Spots Eurolite 7C-12/7C-7  
im 12-Kanal-Modus  
4 \* 7C-12 Fronttruss  
4 \* 7C-7 Gasse  
4 \* 7C-12 Floor  
4 \* 7C-7 Tanzfläche (Houselight)
- ab 1.301 12 LED Spots Cameo Flat Pro 7 Spot im 10  
Kanal-Modus  
8 \* Backtruss  
4 \* Tanzfläche (Houselight)

- 1.511 Hazer Look UNIQUE 2.1

#### Universum 2

- ab 2.1 8 LED Wash GLP Impression 4Xs  
im High Resolution (Extended) - Mode -19  
DMX Channels  
4\* Decke  
4 \* Floor
- ab 2.201 4 LED Spots Martin Rush MH1 Profile Plus -  
17 Kanäle  
an der Decke
- ab 2.401 6 Eurolite LED Bar RGB 252/10  
im 12 Kanal-Modus  
4 \* an den Wänden  
2 \* beweglich

#### Eurolite LED 7C-12 und 7C-7

- 12 Kanal Modus
- |      |        |      |         |
|------|--------|------|---------|
| CH 1 | Dimmer | CH 2 | Shutter |
| CH 3 | Red    | CH 4 | Green   |

- |       |                   |      |            |
|-------|-------------------|------|------------|
| CH 5  | Blue              | CH 6 | Cool white |
| CH 7  | Warm white        | CH 8 | Amber      |
| CH 9  | Preset Colors     |      |            |
| CH 11 | Internal programs |      |            |
| CH 12 | Color temperature |      |            |

#### Cameo Flat Par Pro Spot

- 10 Kanal Modus
- |       |                            |      |          |
|-------|----------------------------|------|----------|
| CH 1  | Dimmer                     |      |          |
| CH 2  | Shutter                    | CH 3 | Duration |
| CH 4  | Red                        | CH 5 | Green    |
| CH 6  | Blue                       | CH 7 | White    |
| CH 8  | Color Macro (override RGB) |      |          |
| CH 9  | Color Temperature          |      |          |
| CH 10 | Sound (0-5 = Off)          |      |          |

#### LED Wash GLP Impression 4Xs:

High Resolution (Extended) - Mode

19 DMX Kanäle

- |       |         |       |            |
|-------|---------|-------|------------|
| CH 1  | Pan     | CH 2  | Pan fine   |
| CH 3  | Tilt    | CH 4  | Tilt fine  |
| CH 5  | Red     | CH 6  | Red fine   |
| CH 7  | Green   | CH 8  | Green fine |
| CH 9  | Blue    | CH 10 | Blue fine  |
| CH 11 | White   | CH 12 | White fine |
| CH 13 | Shutter |       |            |

#### Martin Rush Mh1 Profile Plus

17 DMX Kanäle

- |       |                |       |                    |
|-------|----------------|-------|--------------------|
| CH 1  | Pan            | CH 2  | Pan fine           |
| CH 3  | Tilt           | CH 4  | Tilt fine          |
| CH 5  | Pan/Tilt Speed | CH 6  | Dimmer             |
| CH 7  | Shutter        | CH 8  | Color wheel 1      |
| CH 9  | Color wheel 2  | CH 10 | Gobo wheel 1 (rot) |
| CH 11 | Gobo rotation  | CH 12 | Gobo wheel 2 (fix) |
| CH 13 | Prism          | CH 14 | Prism rot          |
| CH 15 | Iris           | Ch 16 | Focus              |
| CH 17 | Control        |       |                    |

#### Eurolite LED Bar RGB 252/10:

12-Kanal-Modus

- CH 1 MODE Dmx 1-15 für 12 Kanal-Modus  
CH 2 Dimmer  
CH 3 Flash  
CH 4/5/6 RGB-Modul 1  
CH 7/8/9 RGB-Modul 2  
CH 10/11/12 RGB-Modul 3  
6-Kanal-Modus  
CH 1 MODE Dmx 6-30 für 6 Kanal-Modus  
CH 2 Dimmer  
CH 3 Flash  
CH 4/5/6 RGB alle Module

#### Strobe-Controller DMX-10V:

DMX-Wert 0-249 Bitzgeschwindigkeit  
DMX-Wert 250-255 Einzelblitz

#### Pinspot Halfmirkorbball Eurolite LED PST-15:

- |      |         |      |        |
|------|---------|------|--------|
| CH 1 | Shutter | CH 2 | Dimmer |
|------|---------|------|--------|

#### Hazer Look UNIQUE 2.1:

- |      |       |      |            |
|------|-------|------|------------|
| CH 1 | Pumpe | CH 2 | Ventilator |
|------|-------|------|------------|